

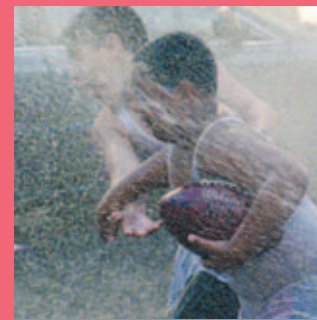
SAMUEL S. FELS FUND

A REPORT FOR THE YEAR ENDED DECEMBER 31, 2006 71ST YEAR 1935-2006





SAMUEL S. FELS FUND



71ST YEAR 1935-2006

HISTORY AND PURPOSE

The Samuel S. Fels Fund was incorporated as a Pennsylvania nonprofit corporation on December 17, 1935. The Charter was accepted and the foundation's work begun at the organizational meeting on January 27, 1936.

The Fund's founder was Samuel S. Fels, Philadelphia philanthropist and civic leader who was president of Fels & Company, manufacturer of Fels Naptha, a vastly popular household soap. Sam Fels was born in Yanceyville, North Carolina in 1860 and died in Philadelphia on June 23, 1950.

The general purpose of the Fund, as stated in the Charter, is "TO INITIATE AND TO ASSIST ANY ACTIVITIES OR PROJECTS OF A SCIENTIFIC, EDUCATIONAL OR CHARITABLE NATURE WHICH TEND TO IMPROVE HUMAN DAILY LIFE AND TO BRING TO THE AVERAGE PERSON GREATER HEALTH, HAPPINESS, AND A FULLER

UNDERSTANDING OF THE MEANING AND PURPOSES OF LIFE."

To this end the Fund makes grants in the categories of Arts and Humanities, Education, and Community Programs, all in the city of Philadelphia. The ideal proposal to Fels is one that addresses positive social change. We also mean to be useful to organizations at points of particular need such as expansion, experimentation, or reorganization or in times of particular need for advocacy. The Fund is unable to make grants to individuals and accepts proposals only from organizations that are designated tax-exempt (501-c-3) by the Internal Revenue Service. The Fund does not make grants for conferences, scholarships, fellowships or travel. Ordinarily, the Fund also avoids making grants for major programs of large institutions, capital and equipment, endowment, and the routine or

direct services of social service agencies. Individual day care and after school care programs and computer centers cannot be accommodated, although agencies that serve these fields may apply.

The Fund also runs an annual program, the Fels Internships in Community Service. Recent grantees are invited to submit descriptions of projects that could be done by graduate students over the course of ten weeks in the summer. Organizations whose projects are selected receive \$6,000 to pay the graduate students, whom they select. The program is a way to draw talent to the not-for-profit sector and to carry out serious work on the community's behalf.

Applications are accepted at any time (with the exception of Arts and Humanities projects which are due by 5 p.m. on January 15th or May 15th). Agencies are asked to refrain



from reapplying for a year after the proposal has been declined or until a final report has been accepted if a grant was awarded. Guidelines for applicants, with proposal requirements and cover sheet, are available on our website at www.samfels.org or by calling (215) 731-9455.

AFTER A FEW TURBULENT YEARS, 2006 WAS RELATIVELY CALM. We lost a valued board member, Anthony Santomero, to a new job in New York and our excellent accountant, Ginny Vitella, had a second baby. We made 191 grants and spent \$2,018,502 doing so. 2006 was an extremely busy year, but it was peaceful.

We spent part of 2006 examining our own practices. We decided to look at our administrative operations, asking ourselves if we should be leaner, or fatter, and if we could be more efficient. We looked at ourselves compared to other local funders and we compared our costs and practices to other foundations around the country. After comparing ourselves against benchmarks for administrative costs as a percentage of assets; administrative costs as a percentage of grant payments; administrative costs as a percentage of total payout; costs of investment management; and administrative costs related to the number of grants made, a few things became clear. First, there is no local foundation that is identical to us when it comes to staff size, endowment size, and number of grants nor did we find a twin on the national scene. Second, and most important, is that we ended our exercise feeling confident that our spending ratios are right for us, that our 2.2 staff size, our administrative and investment

costs, and our modus operandi suit our purpose of serving Philadelphia.

With our broad mandate we certainly do serve Philadelphia in many ways. While our grants covered many areas—arts, community, and education—there were certain concentrations in 2006. One of the deepest was a focus on grants to organizations that serve immigrants.

We made grants to a fine array including:

- ACANA, the Africana Cultural Alliance of North America;
- Arab American CDC;
- Asian Arts Initiative;
- Cambodian American Senior Association;
- Cambodian Association of Greater Philadelphia;
- Greater Philadelphia Overseas Chinese Association;
- Haitian Community Help Center;
- Hispanics in Philanthropy;
- HUNE, Hispanos Unidos para Ninos Excepcionales;
- Juntos;
- Nueva Esperanza;
- Open Borders Project;
- The Pennsylvania Immigration and Citizenship Coalition; and
- the Welcoming Center for New Pennsylvanians.

Many of these organizations are Mutual Assistance Agencies or MAAs, a term used to describe an organization formed to help people,

generally of the same origins, thrive in their new country. MAAs are typically one-stop shopping centers for English as a Second Language and citizenship classes; translation and accompaniment services; job banks; health and social service referral resources; cultural centers; food banks; and, simply, the place to go for help.

ACANA which helps mostly Liberians and people from Sierra Leon; both Cambodian associations; the Overseas Chinese Association; the Haitian Community Help Center; and Juntos which has a predominantly Mexican cliental, are all classic MAAs. The tiny Arab American organization and the large Nueva Esperanza (Puerto Rican and Latino serving) are concerned with economic and community development. The Asian Arts Initiative, as its name implies, builds community and builds leaders through the arts. HUNE helps Latino families negotiate the public

school system for children with learning differences and Open Borders provides leadership and organizing training through English and computer classes.

Hispanics in Philanthropy matches local dollars (Fels is one of nine local funders) with funds from national foundations to provide capacity building grants to Latino serving organizations. The Pennsylvania Immigration and Citizenship Coalition is the trade association for them all, providing information, education, and advocacy on issues affecting immigrants. And, last, the Welcoming Center is a resource for all immigrants seeking work.

It is our hope that these organizations will, by making life better for individuals and families gain for the Philadelphia region a reputation as a safe, healthy place to work and raise a family. By supporting this collection of groups we hope to cushion the blow of relocation for people coming from wartorn or economically distraught parts of the world. We hope to grow the region's population and strengthen its economic underpinnings. We remember that Sam Fels was from an immigrant family.

David H. Wice
President

Helen Cunningham
Executive Director





2006 GRANT PAYMENTS

SAMUEL S. FELS FUND

Program Area	Number of Payments	2006 Payments*
Arts	58	\$ 327,668
Community	81	1,172,500
Education	25	359,834
Internships in Community Service	25	150,000
Memberships	2	8,500
Total	191	2,018,502

**This reflects grant payments made in 2006.*

The full value of multi-year commitments is not listed.



1812 Productions-----	\$5,000
<i>General support</i>	
215 Festival-----	2,000
<i>General support</i>	
Amaryllis Theatre Company-----	3,000
<i>General support</i>	
Arden Theater Company-----	5,000
<i>General support</i>	
Art Sanctuary-----	7,500
<i>General support</i>	
Astral Artistic Services-----	5,000
<i>General support</i>	
Atwater Kent Museum-----	3,000
<i>“Have you Eaten Yet?” exhibit</i>	
Azuka Theater Collective-----	3,000
<i>General support</i>	
BALLETX-----	3,000
<i>Commission by Jorma Elo</i>	
Chamber Orchestra of Philadelphia-----	5,000
<i>General support</i>	
Chamber Music Now!-----	3,000
<i>General support</i>	
Center for Emerging Visual Artists-----	5,000
<i>General support</i>	
Crafts for Living-----	5,000
<i>General support</i>	
Creative Collective Arts-----	4,000
<i>General support</i>	
Dancefusion-----	2,000
<i>General support</i>	
Foundation for Today’s Art – Nexus-----	4,000
<i>General support</i>	
Gas & Electric Arts-----	3,000
<i>General support</i>	
Headlong Dance Theater-----	7,500
<i>Planning</i>	
Interact Theatre-----	5,000
<i>General support</i>	
Jeanne Ruddy & Dancers-----	3,000
<i>General support</i>	



Jewish Community Center – Gersham Y-----	\$4,000
<i>Borowsky Gallery “Cross/Walks” exhibit</i>	
Lantern Theatre Company-----	5,000
<i>General support</i>	
LaSalle University Art Museum-----	50,000
<i>In honor of Daniel Burke</i>	
Leah Stein Dance Company-----	3,000
<i>General support</i>	
Luna Theater Company-----	3,000
<i>General support</i>	
Melanie Stewart Dance Theatre-----	5,000
<i>NEW Festival</i>	
Mendelssohn Club-----	3,000
<i>General support</i>	
MumPuppet Theatre-----	5,000
<i>General support</i>	
Network for New Music-----	3,000
<i>General support</i>	
Nichole Canuso Dance Company-----	4,000
<i>General support</i>	
Orchestra 2001-----	5,000
<i>Violin concerto project</i>	
Painted Bride Art Center-----	7,500
<i>General support</i>	
Peregrine Arts-----	4,000
<i>General support</i>	
Philadelphia Boys Choir & Chorale-----	3,000
<i>Community outreach initiative</i>	
Philadelphia Chamber Music Society-----	7,500
<i>General support</i>	
Philadelphia Chamber Music Society-----	25,000
<i>In honor of David Melnicoff</i>	
Philadelphia Classical Symphony-----	3,000
<i>“China and the Allure of the Orient” concert</i>	
Philadelphia Dance Projects-----	3,000
<i>General support</i>	
Philadelphia Fringe Festival-----	7,500
<i>General support</i>	
Philadelphia Songwriters Project-----	3,000
<i>Songwriting for Choirs project</i>	

ARTS

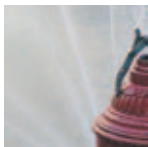


Piffaro-----	\$3,000
<i>General support</i>	
The Philadelphia Print Collaborative -----	5,000
<i>General support</i>	
The Pig Iron Theatre Company-----	4,000
<i>General support</i>	
Prince Music Theatre-----	7,500
<i>“The Pirate”</i>	
The Print Center-----	5,000
<i>Educational program and workshop</i>	
Philagrafika -----	5,000
<i>General support</i>	
The Rosenbach Museum and Library -----	5,000
<i>“Look Again: African Americana at the Rosenbach”</i>	
Samuel S. Fleisher Art Memorial -----	8,334
<i>In honor of Iso Briselli</i>	
Settlement Music School of Philadelphia -----	8,334
<i>In honor of Iso Briselli</i>	
Singing City -----	3,000
<i>General support</i>	
Tempesta di Mare-----	3,000
<i>General support</i>	
Temple University, Tyler School of Art -----	3,000
<i>Audience assessment project</i>	
Theatre Alliance of Greater Philadelphia-----	7,500
<i>General support</i>	
Theater Catalyst -----	5,000
<i>General support</i>	
Theatre Exile-----	5,000
<i>General support</i>	
Vagabond Acting Troupe-----	3,000
<i>Collaboration with the Penn Museum’s exhibit “Amarna”</i>	
Vox Populi -----	3,000
<i>Relocation expenses</i>	
The Wilma Theater -----	5,000
<i>Caryl Churchill Festival</i>	
TOTAL ARTS (58 PAYMENTS)-----	\$327,668

COMMUNITY



AchieveAbility-----	\$15,000
<i>Director of Development</i>	
ACORN -----	10,000
<i>Inclusionary Zoning Campaign</i>	
African Cultural Alliance of North America/ACANA-----	15,000
<i>General support</i>	
After School Activities Partnership/ASAP-----	7,500
<i>General support</i>	
American Poetry Review -----	3,000
<i>General support</i>	
Arab-American Community Development Corporation-----	15,000
<i>New staff position</i>	
Art-Reach -----	5,000
<i>General support</i>	
Asian Arts Initiative -----	10,000
<i>Transitional support during move</i>	
Bicycle Coalition of Greater Philadelphia-----	10,000
<i>Event coordinator</i>	
Big Brother/Big Sister Association of Philadelphia -----	10,000
<i>Equipment upgrade</i>	
Cambodian American Senior Association-----	7,500
<i>General support</i>	
Cambodian Association of Greater Philadelphia-----	15,000
<i>Youth program</i>	
Campaign for Working Families-----	15,000
<i>Launch the Stored Value Card</i>	
Camp William Penn-----	10,000
<i>Recruiting materials</i>	
Community Education Center -----	7,500
<i>General support</i>	
Community Legal Services -----	15,000
<i>Upgrade the website</i>	
Consumer Bankruptcy Assistance Project-----	15,000
<i>General support</i>	
Delaware Valley Association for Education of Young Children ---	10,000
<i>Merger support</i>	
Energy Coordinating Agency of Philadelphia -----	15,000
<i>Public education related to heating crisis</i>	
Energy Coordinating Agency of Philadelphia -----	15,000
<i>Philly Gets Energy Smart</i>	
Equality Advocates (formerly Center for Lesbian and Gay Civil Rights)-----	15,000
<i>New staff position</i>	



Fair Hill Burial Ground Corporation -----	\$5,000
<i>General support</i>	
Fairmount Park Art Association -----	12,500
<i>New*Land*Marks program</i>	
Fairmount Park Conservancy -----	10,000
<i>Restoration of the Water Works garden</i>	
Fellowship Farm -----	25,000
<i>Emergency conflict resolution fund</i>	
Fireman's Hall-----	5,000
<i>Exhibit improvement</i>	
The Franklin Institute -----	166,000
<i>Modernize the Fels Planetarium</i>	
Friends of the Japanese House and Garden-----	15,000
<i>New Director's grant</i>	
Friends of the Wissahickon-----	10,000
<i>User marketing survey</i>	
Greater Philadelphia Overseas Chinese Association -----	2,500
<i>General support</i>	
Haitian Community Help Center-----	10,000
<i>General support</i>	
Hispanics in Philanthropy-----	16,000
<i>Funders Collaborative for Strong Latino Communities</i>	
Juntos-----	15,000
<i>General support</i>	
La Salle University Nonprofit Center -----	10,000
<i>Technical assistance funds</i>	
Liberty Resources for the Philadelphia Affordable Housing Coalition -----	10,000
<i>Inclusionary Zoning Campaign</i>	
Lutheran Settlement House -----	20,000
<i>Domestic violence trainer</i>	
Mann Center for the Performing Arts-----	50,000
<i>Planning</i>	
Maternity Care Coalition of Greater Philadelphia-----	10,000
<i>Disseminate "Childbirth at a Cross Roads"</i>	
National Nursing Centers Consortium -----	5,000
<i>Students Run Philly Style</i>	
New Directions for Women-----	15,000
<i>Program Coordinator</i>	
Northwest Interfaith Movement-----	7,500
<i>Coordinator of Volunteers</i>	
NPower-----	10,000
<i>Technology plans for Philadelphia non-profits</i>	



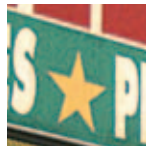
Nueva Esperanza-----	\$10,000
<i>Fundraising staff</i>	
Open Borders Project -----	25,000
<i>General support</i>	
Partners for Sacred Places-----	33,000
<i>Philadelphia Fund for Sacred Places</i>	
PathwaysPA -----	15,000
<i>Self-sufficiency advocacy</i>	
Philadelphia Parks Alliance-----	10,000
<i>Policy and communications consultant</i>	
Pennsylvania Horticultural Society-----	10,000
<i>Volunteer Manager</i>	
Pennsylvania Immigration and Citizenship Coalition -----	15,000
<i>General support</i>	
Pennsylvania Prison Society -----	15,000
<i>Healthcare Clearinghouse Project</i>	
Philadelphia Area Disc Alliance -----	10,000
<i>New position and renovation of a field</i>	
Philadelphia Association of Community Development Corporations-----	15,000
<i>Policy work</i>	
Philadelphia Cares -----	15,000
<i>Kensington Initiative</i>	
Philadelphia Citizens for Children and Youth -----	15,000
<i>General support</i>	
Philadelphia Folklore Project-----	10,000
<i>Staff expansion</i>	
Philadelphia Health Management Corporation -----	10,000
<i>Technical assistance for Philadelphia nonprofits</i>	
Philadelphia Museum of Art-----	5,000
<i>Outreach</i>	
Philadelphia Museum of Art-----	5,000
<i>The Gross Clinic Emergency Fund</i>	
Philadelphia Physicians for Social Responsibility-----	10,000
<i>Violence intervention program</i>	
Philadelphia Theatre Company -----	12,500
<i>Campaign costs</i>	
Philadelphia VIP-----	11,500
<i>Upgrade technology</i>	
Philadelphia Youth Network -----	30,000
<i>Summer Career Exploration Program</i>	
Philadelphia Youth Orchestra-----	5,000
<i>General support</i>	

COMMUNITY



Philly Fellows-----	\$15,000
<i>General support</i>	
Planned Parenthood of Southeastern Pennsylvania -----	10,000
<i>Public policy</i>	
Project HOME -----	20,000
<i>Public policy</i>	
Society Created to Reduce Urban Blight/SCRUB-----	10,000
<i>General support</i>	
Spiral Q Puppet Theater -----	10,000
<i>New staff position</i>	
Support Center for Child Advocates -----	15,000
<i>Volunteer Enhancement Program</i>	
Supportive Older Women’s Network -----	15,000
<i>GrandFamily Resource Center</i>	
Taller Puertorriqueño -----	15,000
<i>Youth artist program</i>	
United Communities Community Development Corporation-----	7,500
<i>General support</i>	
Unemployment Information Center -----	10,000
<i>General support</i>	
University of the Arts -----	5,000
<i>Leveraging Investments in Creativity Philadelphia (LINC)</i>	
Village of Arts and Humanities-----	15,000
<i>General support</i>	
White Dog Café Foundation -----	5,000
<i>Planning</i>	
Women’s Community Revitalization Project-----	20,000
<i>Staff development</i>	
Women’s Law Project-----	20,000
<i>Women Vote PA</i>	
Women’s Medical Fund -----	3,000
<i>Planning</i>	
Women’s Therapy Center -----	10,000
<i>Changing Paces</i>	
Youth Service-----	15,000
<i>New Director’s grant</i>	
TOTAL COMMUNITY (81 PAYMENTS) -----	\$1,172,500

EDUCATION



Black Alliance for Educational Options -----	\$15,000
<i>Expand the Parents with Power program</i>	
Bright Lights Initiative-----	5,000
<i>General support</i>	
Children’s Literacy Initiative-----	30,000
<i>Create a model school</i>	
Education Law Center – PA -----	25,000
<i>Advocacy for English language learners in public schools</i>	
Fels Institute of Government -----	100,000
<i>Masters of Governmental Administration Program</i>	
Gay Community Center of Philadelphia -----	7,500
<i>Way Gay U</i>	
Good Schools Pennsylvania-----	15,000
<i>General support</i>	
Moore College of Art-----	10,000
<i>Frederick Douglass School Art Program</i>	
Mount Carmel Human Development Corporation-----	5,000
<i>Purchase of musical instruments</i>	
Musicopia-----	20,000
<i>Gabriel’s Music</i>	
The Opera Company of Philadelphia -----	6,000
<i>Sounds of Learning</i>	
Pennsylvania Ballet Association -----	6,000
<i>Accent on Dance</i>	
Philadelphia Academies-----	15,000
<i>New Director’s grant</i>	
Philadelphia Education Fund-----	8,334
<i>In honor of Iso Briselli/Philadelphia Scholars Fund</i>	
Philadelphia Hispanos Unidos para Niños Excepcionales/HUNE -----	10,000
<i>General support</i>	
Philadelphia Museum of Art-----	5,000
<i>Latino outreach</i>	
Philadelphia Young Playwrights Program -----	10,000
<i>Philadelphia public schools program</i>	
Philadelphia Shakespeare Festival -----	6,000
<i>Philadelphia public schools program</i>	
Research for Action -----	5,000
<i>Amplifying Student Voices</i>	

EDUCATION



Samuel S. Fleisher Art Memorial -----	\$5,000
<i>Community partnerships in the arts</i>	
Summerbridge of Greater Philadelphia -----	16,000
<i>Student Service Coordinator position</i>	
Teacher for America-----	25,000
<i>Continued expansion</i>	
Theatre Ariel-----	5,000
<i>Oral history project</i>	
Walnut Street Theatre -----	5,000
<i>Adopt-a-School Program</i>	
TOTAL EDUCATION (25 PAYMENTS) -----	\$359,834

MEMBERSHIPS



Delaware Valley Grantmakers -----	\$3,500
Free Library of Philadelphia -----	5,000
TOTAL MEMBERSHIPS (2 PAYMENTS) -----	\$8,500

INTERNSHIPS IN COMMUNITY SERVICE



Arden Theater Company-----	\$6,000
Art Sanctuary-----	6,000
Bethesda Project -----	6,000
Big Brother/Big Sister Association of Philadelphia-----	6,000
CHOICE-----	6,000
Community Design Collaborative of AIA -----	6,000
Community Legal Services -----	6,000
Equality Advocates (formerly Center for Lesbian and Gay Civil Rights) -----	6,000
Fellowship Farm -----	6,000
Fels Institute of Government-----	6,000
Foundation for Today's Art – Nexus -----	6,000
Good Shepherd Corporation -----	6,000
Historical Society of Pennsylvania -----	6,000
The Library Company of Philadelphia -----	6,000
Neighborhood Gardens Association -----	6,000
Theatre Alliance of Greater Philadelphia-----	6,000
Philadelphia Youth Network -----	6,000
Public School Notebook -----	6,000
The Rosenbach Museum and Library -----	6,000
Spiral Q Puppet Theater -----	6,000
Support Center for Child Advocates -----	6,000
The Welcoming Center for New Pennsylvanians-----	6,000
Women's Community Revitalization Project-----	6,000
TOTAL INTERNSHIPS (25 PAYMENTS) -----	\$150,000





ACTIVITIES

STATEMENT OF

December 31, 2006 and 2005	2006	2005
Changes in unrestricted net assets		
Revenue		
Investment income	\$ 1,861,173	\$ 1,506,081
Net realized gains on investments	2,325,953	835,044
Net unrealized gains on investments	2,002,410	902,083
TOTAL REVENUE	6,189,536	3,243,208
Expenses		
Grant appropriations	1,724,501	1,724,620
Investment advisory fee	463	723
Management and general expenses	422,983	421,347
TOTAL EXPENSES	2,147,947	2,146,690
Changes in unrestricted net assets before provision for excise taxes	4,041,589	1,096,518
Federal excise taxes on net investment income	123,459	37,997
Changes in unrestricted net assets	3,918,130	1,058,521
Net assets, beginning of year	49,239,025	48,180,504
Net assets, end of year	\$ 53,157,155	\$ 49,239,025



MEMBER-DIRECTORS

David H. Wice, *President*

Sandra Featherman, *Vice President*

Ida K. Chen, *Treasurer*

Helen Cunningham, *Secretary*

Daniel Burke

Phoebe A. Haddon

David Melnicoff

Emanuel Ortiz

Mindy M. Posoff

Anthony Santomero*

* Resigned in 2006

STAFF

Helen Cunningham

Executive Director

Robin Scott

Office Administrator

Tim Murray

Program Assistant

Virginia Vitella

Accountant

Fox, Rothschild, O'Brien & Frankel

Counsel

Asher & Company, LTD

Auditors

SAMUEL S. FELS FUND

Suite 800

1616 Walnut Street

Philadelphia, PA 19103

215-731-9455

www.samfels.org

The photographs in this report are the work of Sarah Stefana Smith. She is a 2004 graduate of Spelman College where she received a BA in Sociology and Anthropology. Smith calls herself "an activist, observer, and photographer." The photographs used here, says Smith, "are informed by the amazing work being done by community groups around issues of labor, immigration, and housing throughout the city." Smith exhibits in both traditional galleries and non-traditional spaces. She was a Leeway Art and Change grant winner in 2006 and she is currently on the staff at the Bread and Roses Community Fund.

